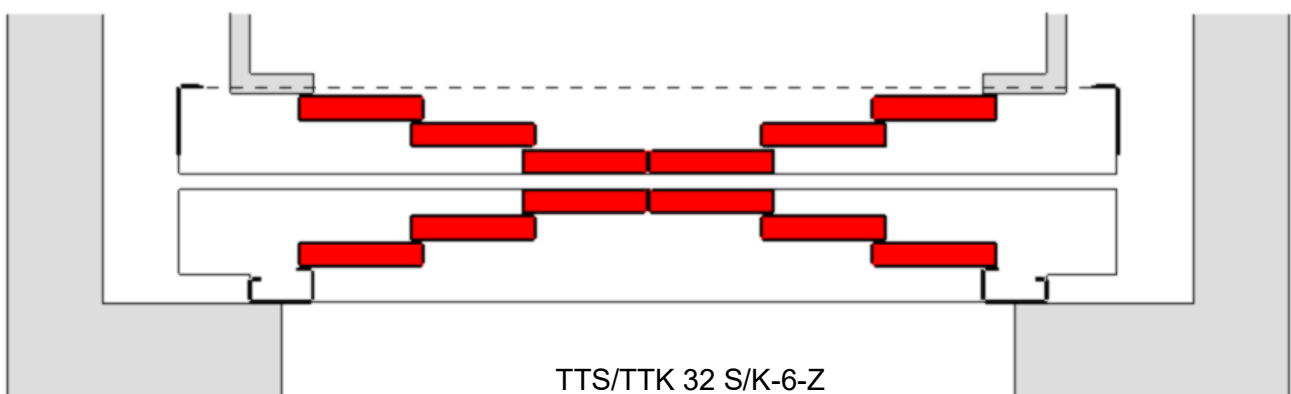
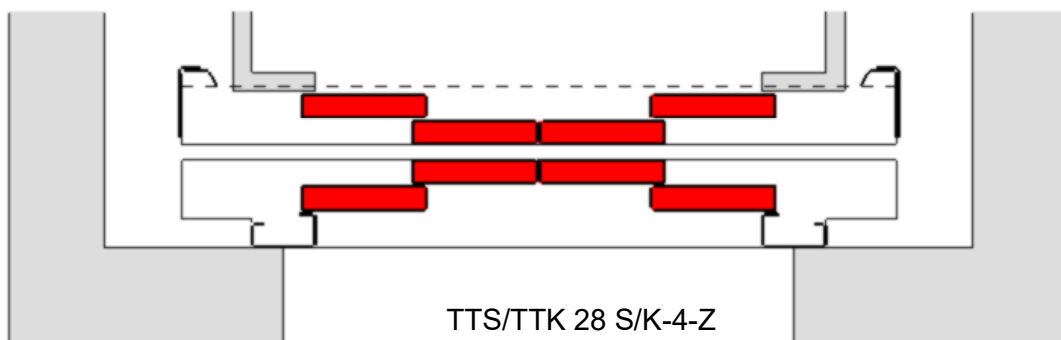
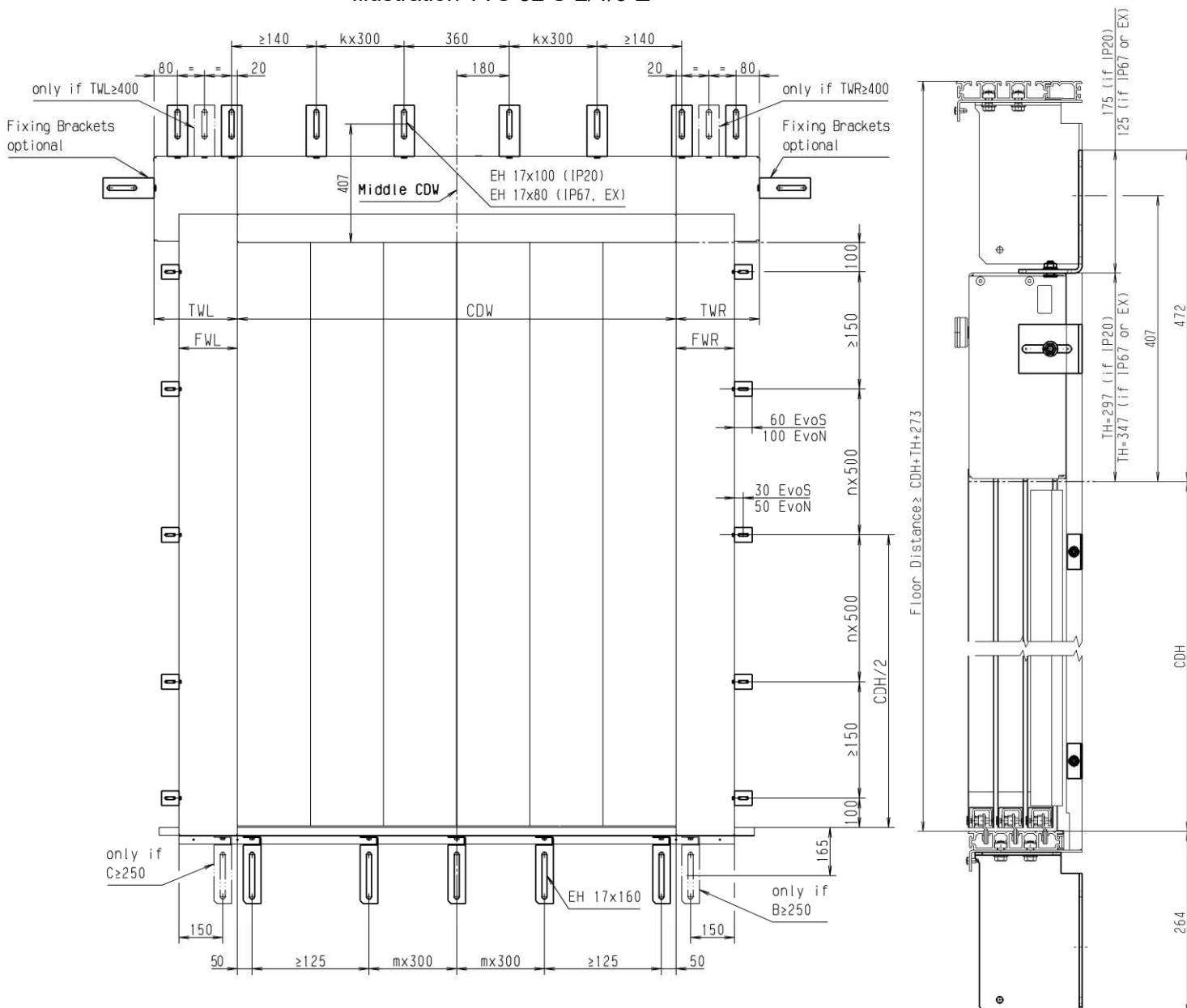


## Door Panel partitioning center opening Landing- and Car Doors



## Fixing Chart for center opening Landing Doors (STS26, TTS 28/32 S-2/4/6-Z)

Illustration TTS 32 S-2/4/6-Z



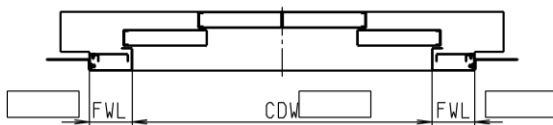
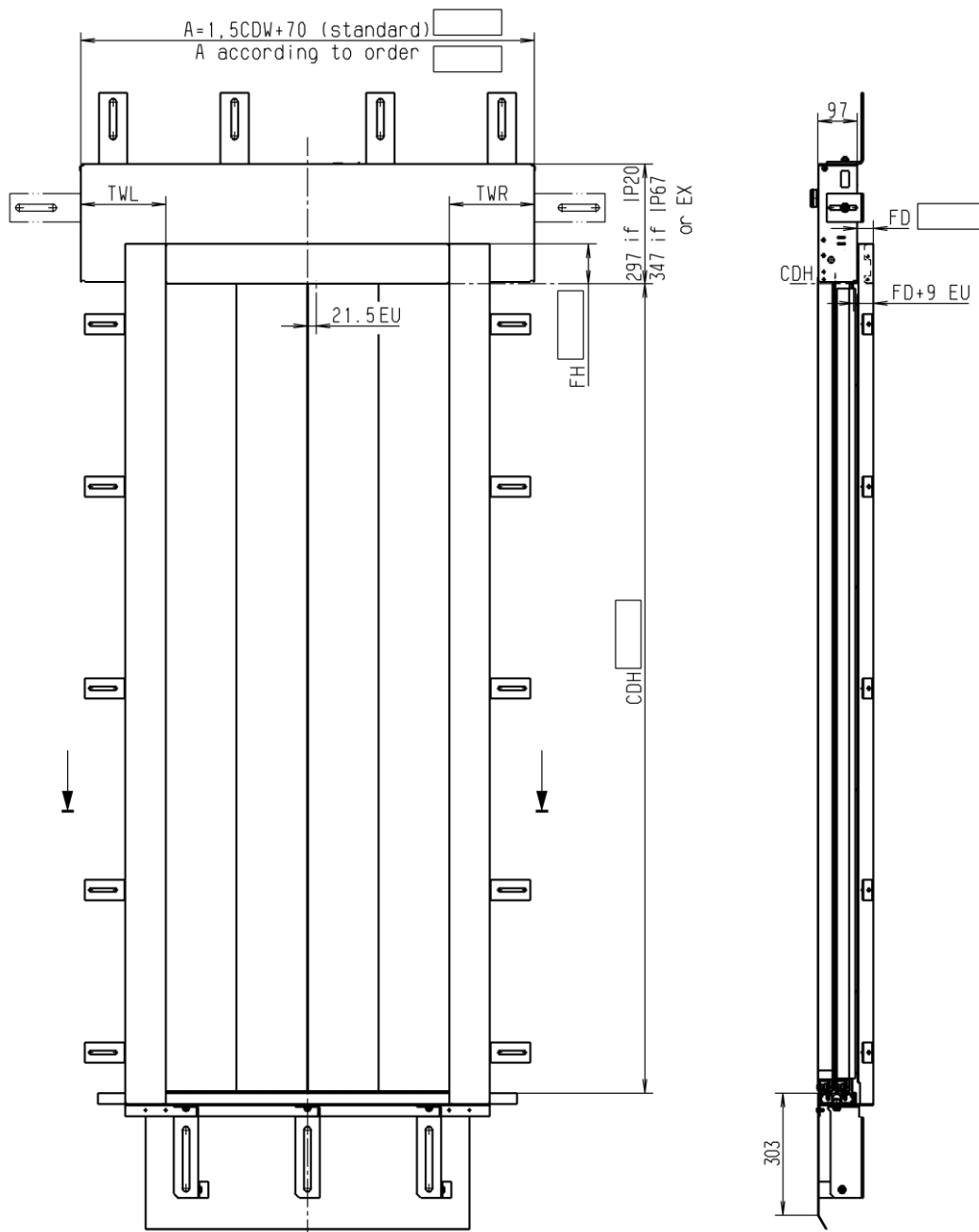
CDH: Clear Door Height  
 CDW: Clear Door Width  
 TH: Trasom Height  
 FWR/FWL: Frame Width right/left  
 TWR/TWL: Transom Width right/left

For Sill angle in Standard length  
 C=FWL, and B=FWR

For Sill angle in Transom Width  
 C=TWL, and B=TWR

Subject to alterations !

## Dimension Sheet TTS 28 S-4-Z



Standard Frame Dimensions  
see page 12 and page 13

\* if dimensions are not in accordance to DIN 18091, doors built in a similar design to DIN 18091

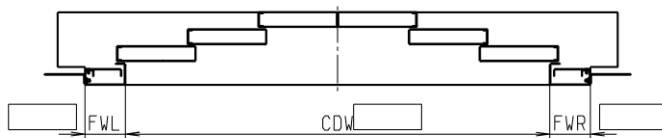
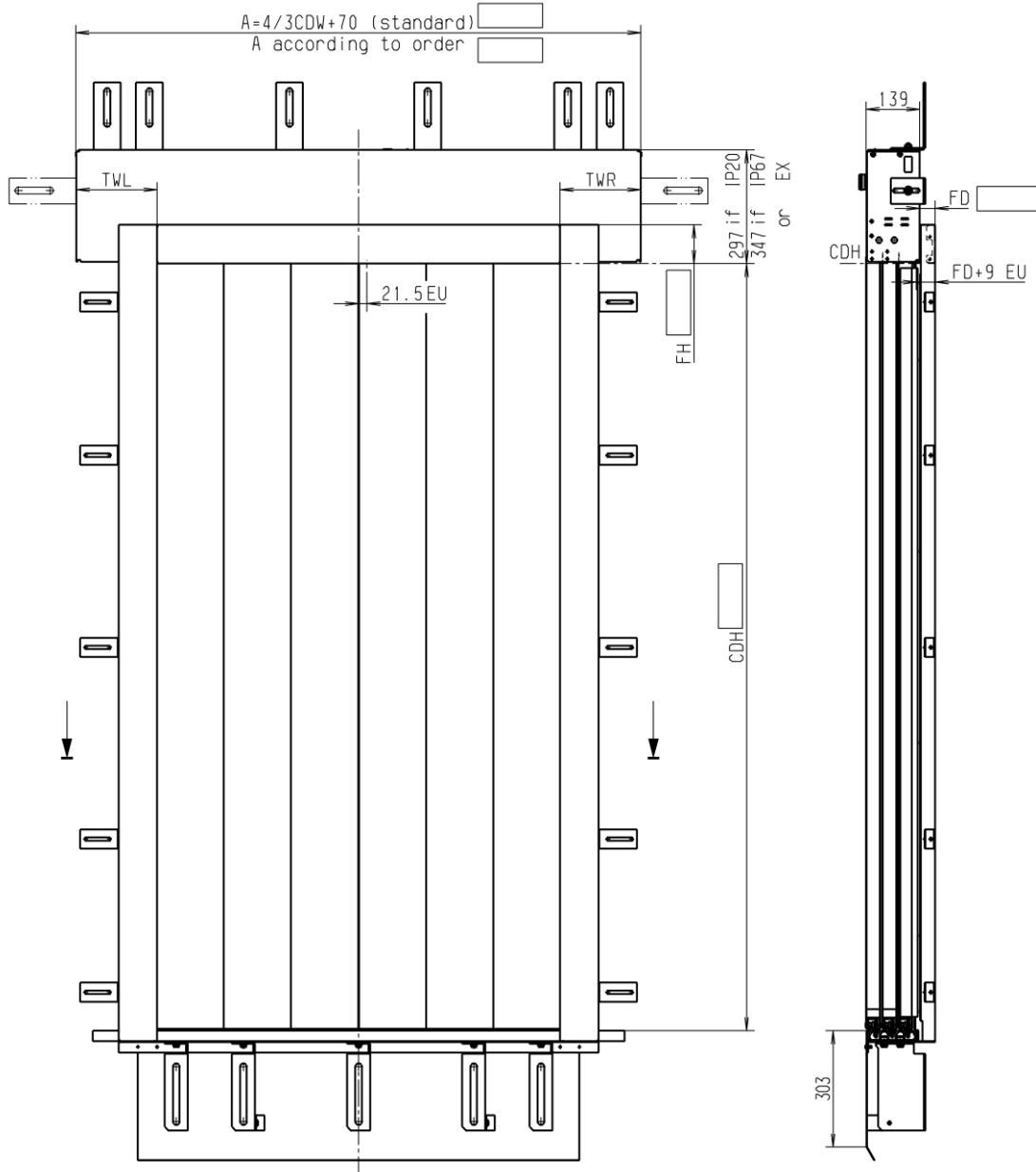
\*\* with reservations to special door types, designs and categories

EU: Emergency Release

Subject to alterations!

		acc. DIN18091*	acc. DIN18091 and EN81-58**
CDW:	Clear Door Width	700 - 3200mm	700 - 3000mm
CDH:	Clear Door Height	2000 - 3500mm	2000 - 3500mm
FD:	Frame Depth	23 - 100mm	23 - 90mm
FH:	Frame Height	80 - 400mm	80 - 200mm
FWR/FWL:	Frame Width right/left	80 - TWR/TWL	80 - 200mm
TWR/TWL:	Transom Width right/left	COW/4+35 - 1000mm	COW/4+35

## Dimension Sheet TTS 32 S-6-Z



Standard Frame Dimensions see page 12 and page 13

\*if dimensions are not in accordance to DIN 18091, doors built in a similar design to DIN 18091

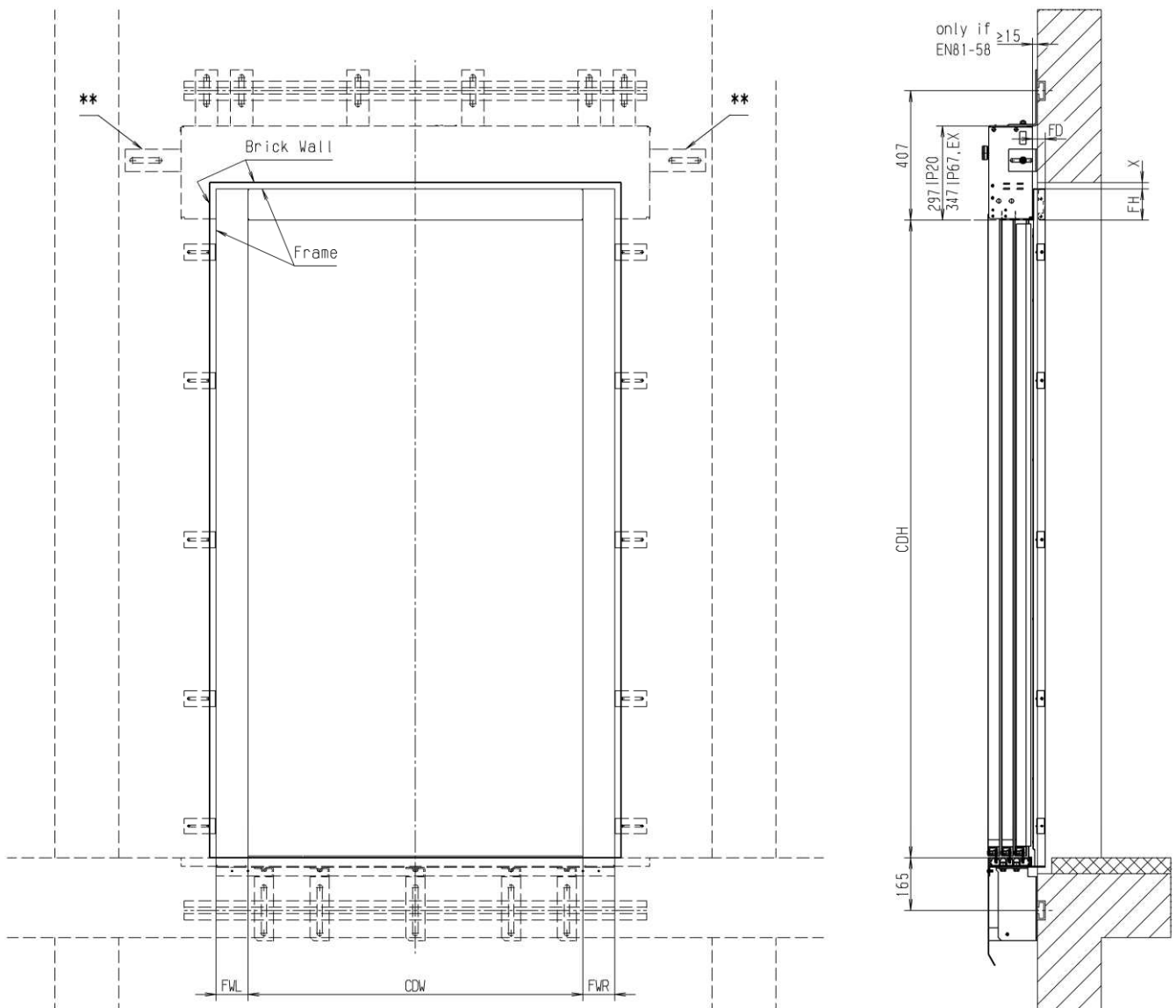
\*\* with reservations to special door types, designs and categories

EU: Emergency Realese

Subject to alterations !

		<u>acc. DIN18091*</u>	<u>acc. DIN18091 and EN81-58**</u>
CDW:	Clear Door Width	1050 - 4000mm	1050 - 3500mm
CDH:	Clear Door Height	2000 - 4200mm	2000 - 3500mm
FD:	Frame Depth	23 - 100mm	23 - 90mm
FH:	Frame Height	80 - 400mm	80 - 200mm
FWR/FWL:	Frame Width right/left	80 - TWR/TWL	80 - 200mm
TWR/TWL:	Transom Width right/left	COW/6+35 - 1000mm	COW/6+35

## Shaft wall cut out STS 26, TTS 28/32 S-2/4/6-Z EvoN



### Standard Frame Dimensions:

FD:	40mm
FH:	100mm
FWR/L:	100mm

### Exception for HD-Doors:

FD:	60mm
FH:	120mm
FWR/L:	120mm

X = Assembly clearance  $\leq 20$ mm

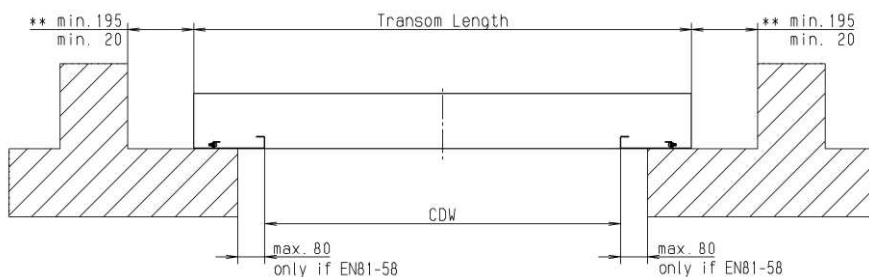
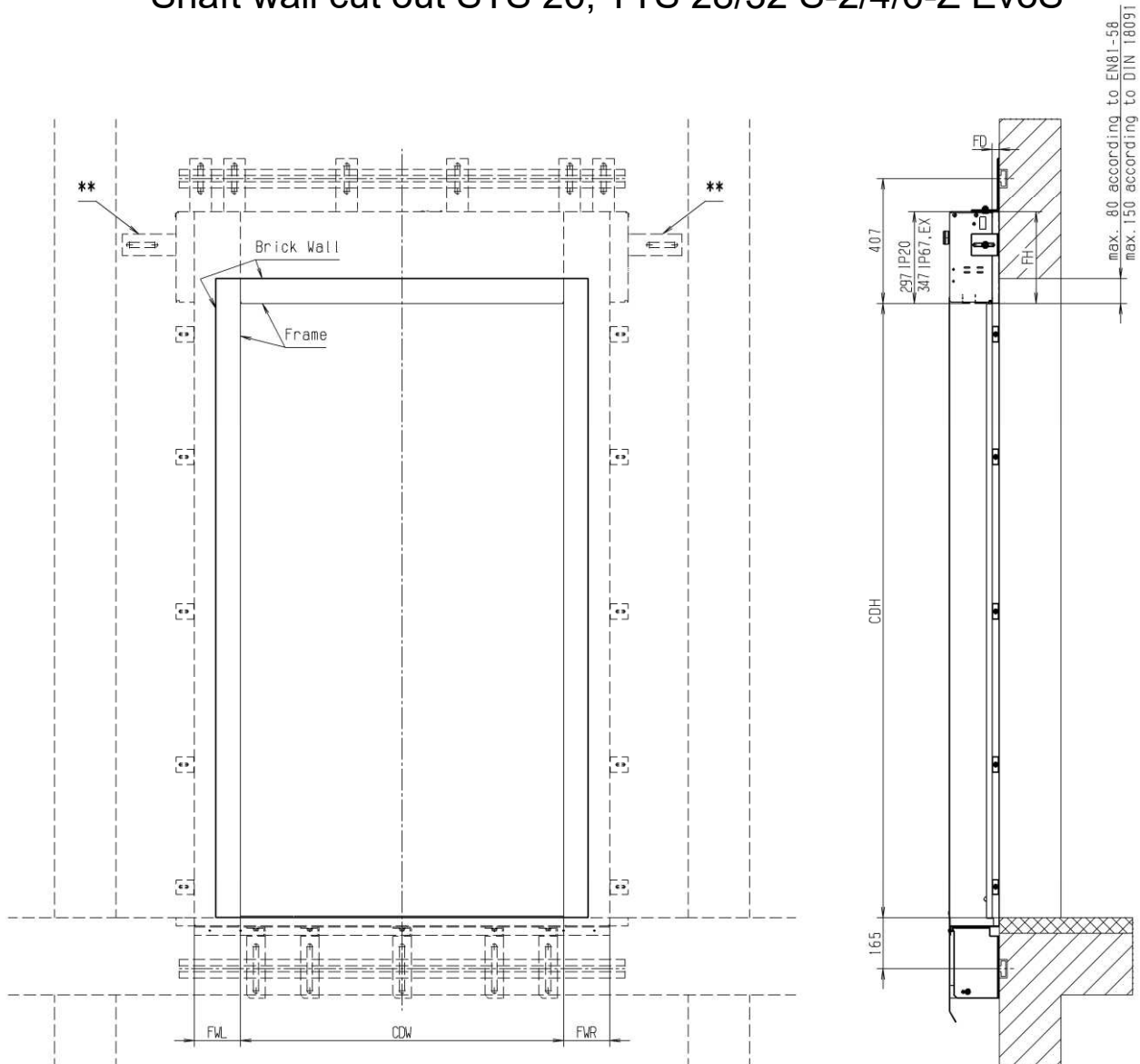
\*\* = dimensions only needed for optional fixing brackets on transom sidewalls (upon request)!

EN81-58: The connection joint between the door frame and the bordering shaft wall must be completely sealed around the whole joint using an approved construction material which is authorised within the country of use.

Wall anchors max. M16 (not included in delivery)

Subject to alterations

## Shaft wall cut out STS 26, TTS 28/32 S-2/4/6-Z EvoS



### Standard Frame Dimensions:

FD:	23mm
FH:	TH
FWR/L:	200mm (TTS28 with CDW≥900mm) (TTS32 with CDW≥1350mm)
FWR/L:	150mm (TTS28 with CDW<900mm) (TTS32 with CDW<1350mm)

### Exception for EN81-58 EI60:

FD:	23mm
FH:	TH
FWR/L:	120mm

\*\* = dimensions only needed for optional fixing brackets on transom sidewalls (upon request)!

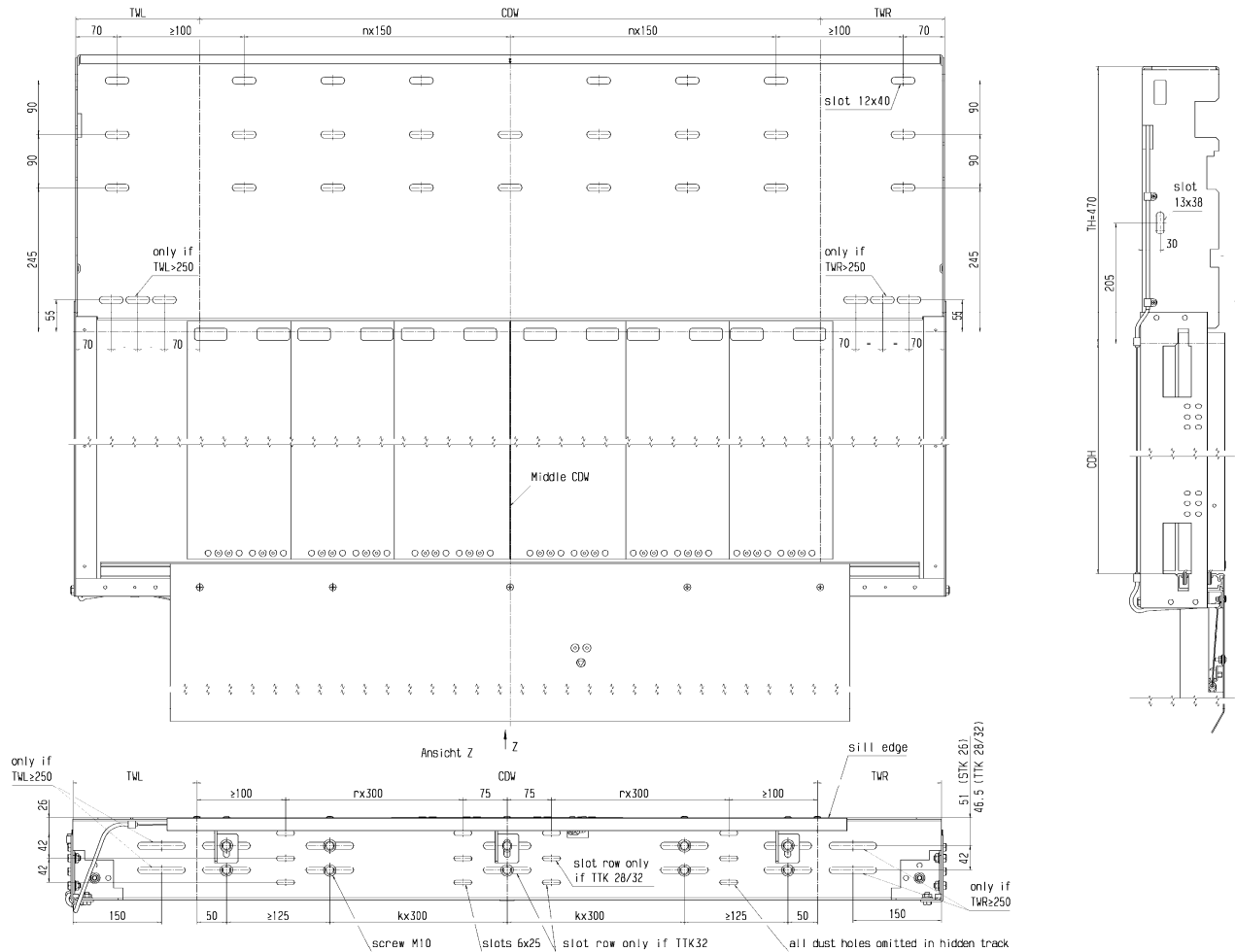
EN81-58: It must be ensured that the maximum protrusion of the frame sections into the clear wall opening is 80mm (see diagram). Should this not be the case, appropriate measures (e.g. walling up) must be undertaken to attain a maximum protrusion of 80mm. The connection joint between the door frame and the bordering shaft wall must be completely sealed around the whole joint using an approved construction material which is authorised within the country of use.

Wall anchors max. M16 (not included in delivery)

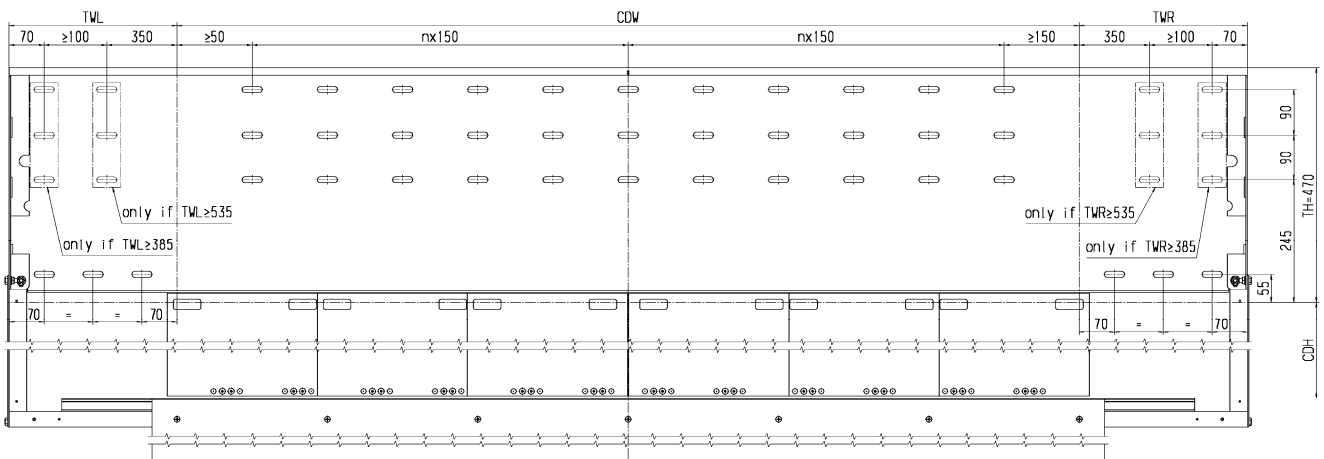
Subject to alterations

## Fixing chart for center opening car doors (STK26 K-2-Z, TTK28 K-4-Z und TTK32 K-6-Z)

with single actuator:



with double actuator:

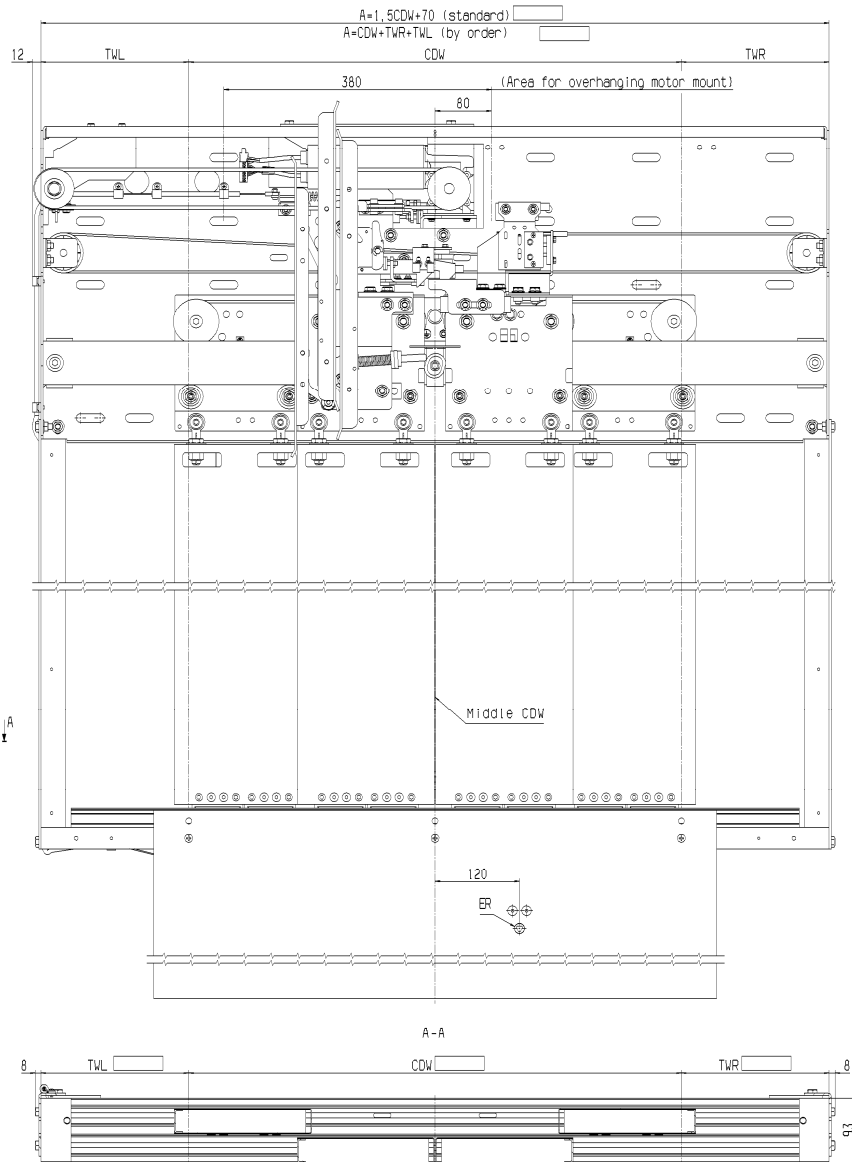


CDW: Clear door width  
CDH: Clear door height

TH: Transom height  
TD: Car door depth  
TWR/TWL: Transom width right/left

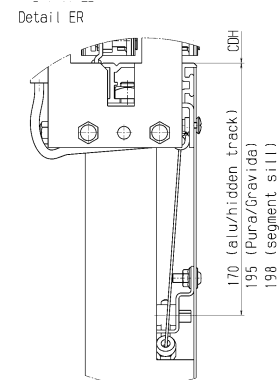
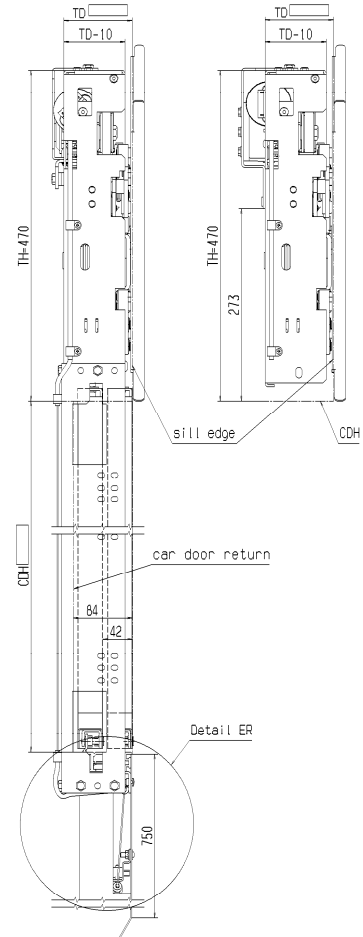
Subject to alterations!

## Dimension sheet TTK28 K-4-Z



TD 97 with AT 40 180kg and TB>920  
 TD 120 with AT 40 400kg and TB>920  
 TD 120 with AT 40 180kg

TD 97 with AT 40 400kg  
 TD 97 with AT 40 180kg and TB<920  
 TD 120 with AT 40 400kg and TB<920



CDW: Clear door width 700 – 3200mm  
 CDH: Clear door height 2000 – 3500mm  
 TD: Car door depth 97mm or 120mm  
 TWR/TWL: Transom width right/left TB/4+35 – by order

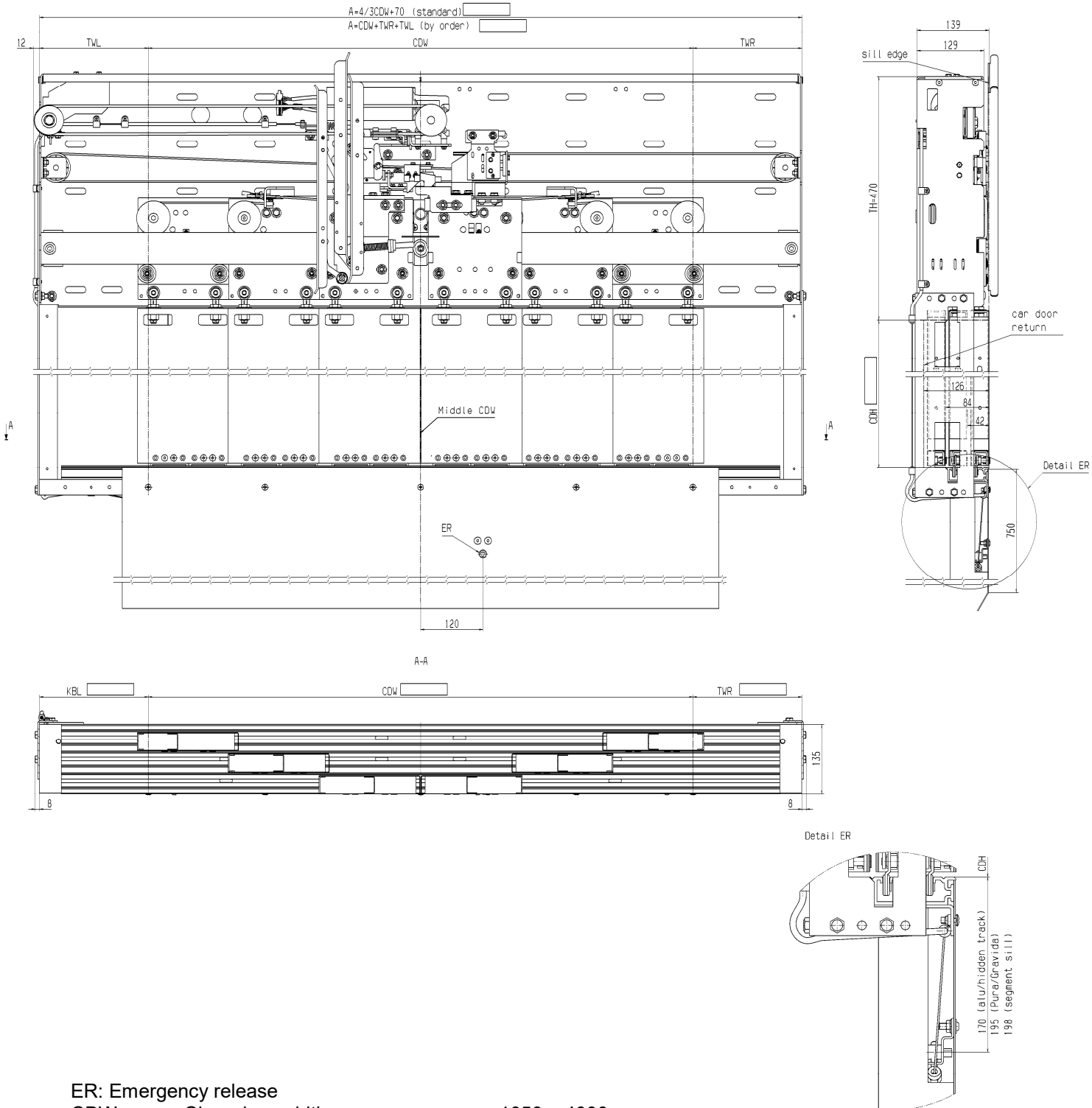
Look the different dimensions for explosion proof

ER: Emergency release

Subject to alterations!



## Dimension sheet TTK 32 K-6-Z



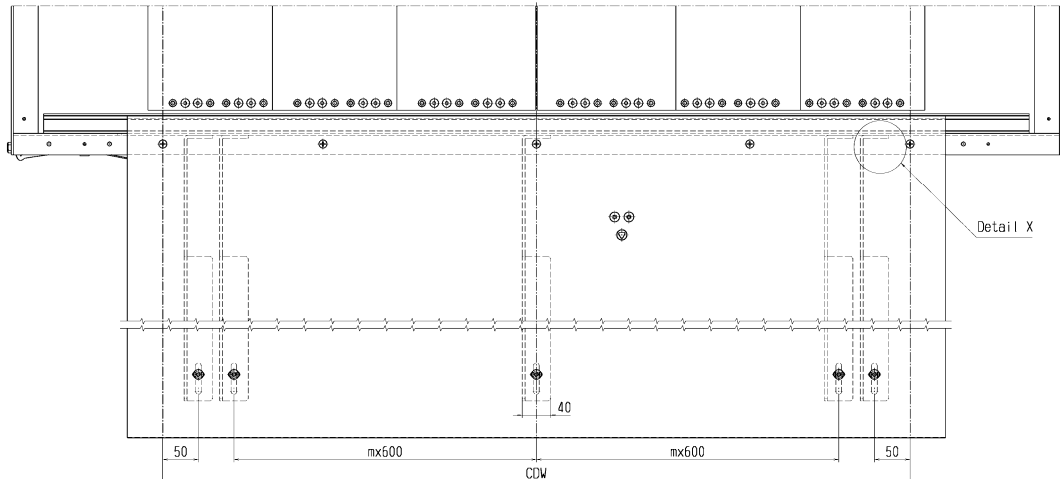
ER: Emergency release  
 CDW: Clear door width 1050 – 4000mm  
 CDH: Clear door height 2000 – 4200mm  
 TD: Car door depth 139mm  
 TWR/TWL: Transom width right/left TB/6+35 – by order

Look the different dimensions for explosion proof

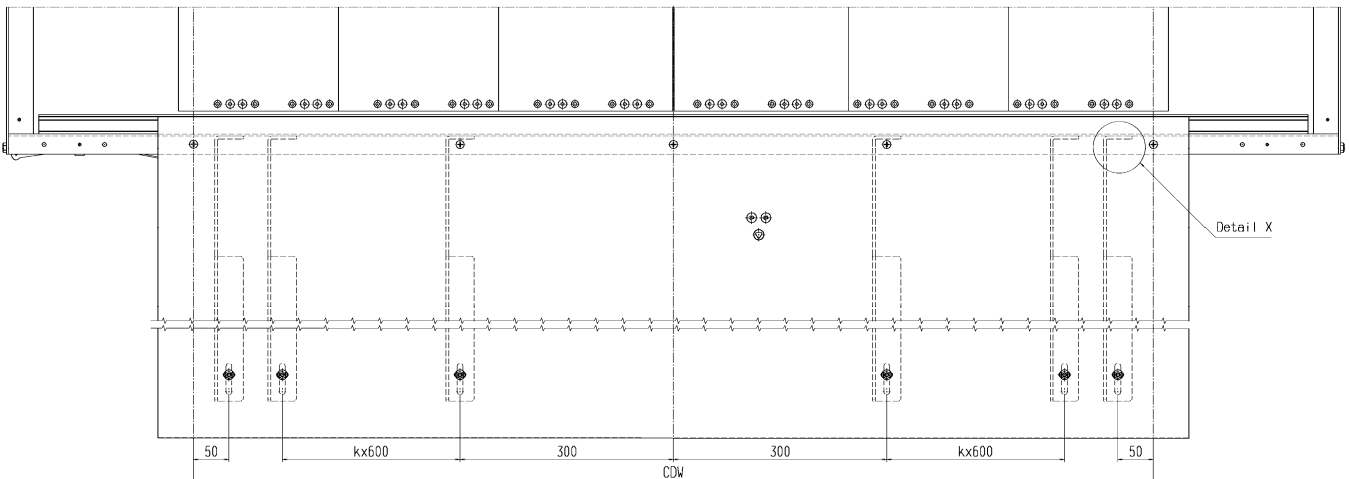
Subject to alterations!

## Fixing chart and the number of the toe guard support profiles TTK 28/32, STK 26

when:  $700 < CDW \leq 1300$   
 $1900 < CDW \leq 2500$   
 $3100 < CDW \leq 3700$   
 $4300 < CDW \leq 4400$



when:  $1300 < CDW \leq 1900$   
 $2500 < CDW \leq 3100$   
 $3700 < CDW \leq 4300$



number of the toe guard support profiles:

2 when  $600 \leq TB \leq 700$   
3 when  $700 < TB \leq 1300$   
4 when  $1300 < TB \leq 1900$   
5 when  $1900 < TB \leq 2500$   
6 when  $2500 < TB \leq 3100$   
7 when  $3100 < TB \leq 3700$   
8 when  $3700 < TB \leq 4300$   
9 when  $4300 < TB \leq 4400$

Detail X

Material thickness sill support  
 $t \leq 10\text{mm}$

